



**INNOVATIONS AND
DESIGNS TO POWER WHEEL
SERVICE EQUIPMENT**



Who We Are

OUR MISSION

The most valued productivity solutions in the world

BELIEFS

We deeply believe in:

Non-negotiable Product and Workplace Safety

Uncompromising Quality

Passionate Customer Care

Fearless Innovation

Rapid Continuous Improvement

VALUES

Our behaviours define our success:

We demonstrate Integrity

We tell the Truth

We respect the Individual

We promote Teamwork

We Listen

VISION

To be acknowledged as the:

Brand of Choice

Employer of Choice

Franchisor of Choice

Business Partner of Choice

Investment of Choice

History of Hofmann

Hofmann has been the innovator and world leader in Automotive Wheel Service Equipment Technology since 1931.

In 1931, Gebruder Hofmann was found by Dyonis and Roman Hofmann in Germany. This marked the beginning of a new era and by 1934 the first balancers for industrial application was launched. Soon thereafter, a subsidiary in UK was started. By 1949, Hofmann had developed the first mechanical balancer for garages and workshops setting the benchmark in wheel equipment for the world to follow. In 1953, they went a step further and introduced wheel balancers with electric measurements.

In 1959, Hofmann launched the on-the-vehicle wheel balancer called Finish Balancer, which today is known as a synonym of on-the-vehicle wheel balancing. In 1960, brake testers to the product line were added. Since then, Hofmann has been adding innovations to the bouquet of world-class product offerings.

Under the aegis of Snap-on, a global innovator, manufacturer and marketer of equipment, Hofmann engineers a wide range of world-class wheel service equipment with a superior eye for performance. Its premium range of wheel aligners is armed with an unbeaten technology to evolve as a versatile and highly accurate equipment.



Our Product Portfolio



i-Aligner



Wheel Balancers



Two Post Lifts



Tyre Changers



Scissor Alignment Lifts

International Range of Regular Equipments

Pyramid Wheel Aligner



Blue-Point Pyramid

Wheel Balancers



geodyna 7300L



geodyna 7340



geodyna 7100

Tyre Changer



monty® 1275

Automotive Lifts



Two Post Lift



Scissor-on-Scissor

Pyramid Wheel Aligner



- Patented imaging technology with accurate and real-time measurements that improves productivity
- User-friendly interface with step-by-step instructions for completing even the most complex tasks
- Features such as EZ-TOE*, VODI* and extensive vehicle specification database that delivers customer satisfaction, ease of use and accuracy
- High resolution imaging technology that delivers accurate, live alignment readings and diagnostic data
- Passive front and rear XD targets that improve durability with no to electronics damage
- Lightweight, durable and impact resistant XD targets and AC100 wheel clamps
- Ride Height Measurement*- Manual ride height to obtain proper alignment specs for those requiring it
- Help video on how to make the needed adjustment to complete even the most complex tasks

Pyramid Wheel Aligner



AC100 Wheel Clamps

- Self-centering design for accurate measurement of vehicle dimensions
- Two-sided claws that eliminate accessories and allow reliable clamping even over hub caps
- Accessories available to accommodate larger wheels



*V.O.D.I.™ Vehicle Orientation Directional Indicator

- Guides the technician through the measurement process

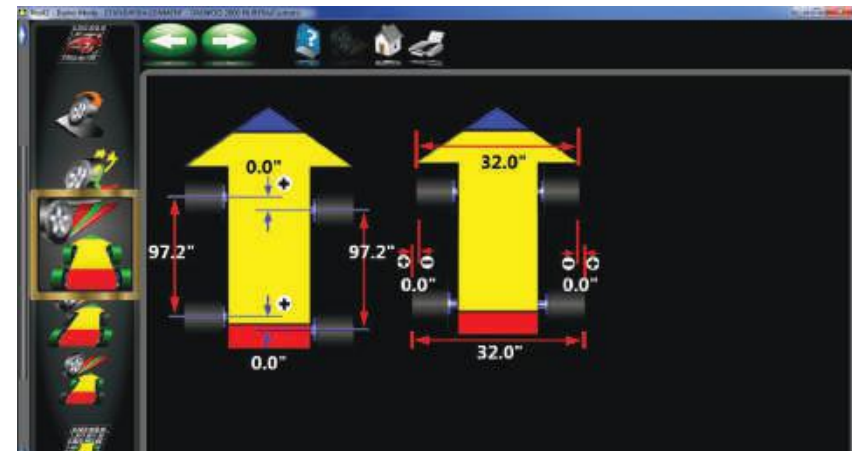
Pyramid Wheel Aligner Features

Features



*EZ-Toe

- Turns the front wheels and accesses difficult adjustment points while still displaying centered toe readings



Vehicle Dimension

- Visual reference to a vehicle depicting wheel base, track width difference and front and rear wheels setback

Pyramid Wheel Aligner Specifications

Specification	
Rim Size	11" – 22" (28 - 56 cm)
Track Width	48" – 96" (122 - 244)
Wheel Base	79" – 180" (201 - 457 cm)
Power Requirments	130/230V, 1Ph, 50/60Hz
Shipping Weight	195 kg
AC100 Weight	11 - 12 lbs (4.9 - 5.2 kg)
Accessories - Optional	Part No
AC100 Wheel Clamps Extention Kit	#EAK0268J62A
Paddle Rollback Kit TT	#EAK0277J28A
Quick Clamp Kit	#EAK0268J63A
Tilt Camera Beam	#EAK0289J64A
TIP Target	#EAK0256J71A

Standard Accessories:

Wheel clamps & targets
Steering wheel holder
Brake pedal depressor
2 x wheel chocks

geodyna 7340



- 10" touch screen display
- Clear and intuitive
- Large digits, bright indicators
- Makes a digital balancer intuitive and easy to operate as a video balancer
- Intuitive operation given by the wide screen, large digits for the amount of the balance weight and bright indicators for the weight position
- Ergonomics and ease of use with touchscreen user interface

geodyna 7340 Features



Smart Sonar™

Automatic, non-contact rim width acquisition delivers greater accuracy and ease of use for a 30% savings in complete process when compared to manual operation.



easyALU™

Touches the rim with the gauge arm to enter the rim dimensions and automatically selects the weight balancing mode.



Stop in position

Touch the screen to automatically rotate the wheel to weight application position.



easyWEIGHT™

Pinpoint laser identifies exact weight placement location for increased accuracy and efficiency.



Multiple users

Two operators can operate with the balancer simultaneously and quickly recall their rim dimensions.



Power Clamp™

Patented automatic Power Clamp™ electromechanical clamps the wheel accurately with a constant force, reducing the opportunity for chasing weight.



VPM technique

Measurement system for high precision and repeatability.



QuickBAL™

30% reduced cycle time, less than 4,5 seconds, maintaining the same high accuracy.

TECHNICAL SPECIFICATIONS

Technical Specifications

Vehicles supported	Passenger cars / light trucks / VAN / SUVs / motorcycles
Diameter of shaft	40 mm
Length of shaft	225 mm
Measuring speed	200 rpm
Angular resolution	± 0.35°
Balancing accuracy	1 g
Start/Stop cycle	4.5 seconds

Data Entry

Rim diameter range	Manual 8" – 32" Semi Automatic 8" – 26"
Offset range	1" – 20"
Rim width range	1" – 20"

Wheel Specs

Max. wheel diameter	42" (1050 mm)
Wheel width range	3" – 20" (508 mm)
Max. wheel offset (without optional spacers)	Up to 260 mm
Max. wheel weight	70 kg (154 lbs)

Dimensions and Weight

Machine Dimensions L x W x H (Machine only, wheel guard open)	138 x 88 x 167 cm
Machine Net Weight	90 kg

HOFMANN®



geodyna 7300L/P



Power Clamp(Optional)



- Intuitive digital display
- Automatic input of distance/diameter and width
- Automatic input of rim width via sonar
- Weight positioning: 12h or 5h positions
- easyWeight program: pin point indicator exact positioning of adhesive weight
- Patented VPI/VPM technology ensures 1gm accuracy
- Easy ALU: Semi-automatic pre-selection of balancing mode
- Gauge arm with wheel weight positioning system
- With split weight, hidden weight program
- Optimization program

geodyna 7300L/P Features



easyWeight

Pinpoint indicator light –
An accurate, fast and easy
solution that position
adhesive weight on the
wheel at 12h/5h position



Smart Sonar

Automatic input of
rim width via
Smart sonar



Data Entry

Semi-automatic input of
rim parameters



easyALU

The balancer
automatically recognizes
the weight mode,
ALU-P or steel rim

geodyna 7300L/P Specifications

Technical Specifications	Unit	<i>geodyna 7300L</i>
Measuring speed	RPM	200
Balancing accuracy	g	1
Angular resolution	Degree	0.7
Measuring time	Second	4.5
Semi-Automatic Parameter Entry		
Rim diameter	Inch	8-25
Rim width	Inch	3-15
Manual Entry		
Rim diameter	Inch	8-32
Offset	Inch	1-20
Rim width	Inch	1-20
Maximum wheel dimension		
Max. wheel diameter	mm	1050
Wheel width range	mm	76-508
Max. wheel weight	kg	70
Diameter of shaft	mm	40
Length of shaft	mm	225
Power supply	V/ph/Hz	230V / 1ph / 50 Hz
Dimension (LXWXH) wheel guard open	mm	1313 X 868 X 1834
New weight	kg	120

geodyna 7100



- Intuitive digital display
- Automatic input of distance/diameter
- Patented VPI/VPM technology ensures 1gm accuracy
- easyALU: Semi-automatic pre-selection of balancing mode
- Gauge arm with wheel weight positioning system
- Mechanical shaft lock
- With split weight, hidden weight program
- Optimization program

geodyna 7100 Specifications

Technical Specifications	Unit	<i>geodyna 7100</i>
Measuring speed	RPM	100
Balancing accuracy	g	1
Angular resolution	Degree	0.7
Measuring time	Second	6
Semi-Automatic Parameter Entry		
Rim diameter	Inch	8-25
Rim width	Inch	3-15
Manual Entry		
Rim diameter	Inch	8-32
Offset	Inch	1-20
Rim width	Inch	1-20
Maximum Wheel Dimension		
Max. wheel diameter	mm	960
Wheel width range	mm	76-508
Max. wheel weight	kg	70
Diameter of shaft	mm	40
Length of shaft	mm	225
Power supply	V/ph/Hz	230V / 1ph / 50 Hz
Dimension (LXWXH) wheel guard open	mm	1100 X 1005 X 1711
New weight	g	70

monty® 1275



- Strong and rugged design of all components ensures long life
- Outer clamping range of up to 20" and 22" capability
- Double acting bead breaker cylinder ensures gentle handling of rims
- Saves space as the mounting arm swings to the side so that installation near the wall is possible
- The self-centering 4-jaw turntable controlled
- 2 clamping cylinders ensures that the rim is always correctly clamped
- Alloy rims are handled particularly gently as mounting head is provided with plastic protectors. The one-part mounting head can be adjusted vertically and horizontally in space apart position relative to the rim
- The bead breaker is provided with a large anti-skid rubber pad to preserve tyres and rims
- Pedals are ergonomically designed for the operator's comfort
- Quick-inflating valve

monty® 1275 Specifications

Technical Specifications	Unit	monty® 1275
Inner clamping range	inches	12 - 22
Outer clamping range	inches	10 - 20
Tyre width	inches	3 - 13
Max. wheel diameter	mm	1000
Bead breaking range	mm	70 - 340
Compressed air supply	bar	8 - 10
Turntable speed	rpm	7.5
Space requirement (L x W x H)	mm	1040 x 1040 x 1690
Weight	kg	187
Power supply	v/ph/Hz	415V, 3PH, 50/60 Hz; 230V, 1PH, 50/60 Hz *Special voltage available on request

Two Post Lift 3.5 Ton



- 3.5 ton clear floor electro hydraulic lift
- Contemporary design from USA with maximum lifting capacity
- 3.5 ton lifting capacity guaranteed
- 2 stage large swing arm
- Heavy duty arm restraints
- Robust electro hydraulic chain over system



Two Post Lift 3.5 Ton Specifications

EQUIPMENT SPECIFICATIONS

Type of Lift	Symmetrical
Capacity	3.5 tons
Overall height	3596 mm
Overall width (includes power pack)	3402 mm
Width between columns	2790 mm
Max lifting height (with pad raised)	1877 mm
Under bar clearance	3384 mm
Pad height from floor	93 mm - 143 mm
Front arm retracted to extended length	781 - 1155 mm
Rear arm retracted to extended length	781 - 1155 mm
Drive-thru clearance	2541 mm
Voltage, phase, hertz	380 V, 3 Ph, 50 Hz; 220 V, 1 Ph, 50 Hz
Lifting time	70 s
Lowering time	50 s
Auxiliary safety - standard arm restraints	Load holding valve on power pack
Type of equalization	Cable
Hydraulic safety	2 cylinders direct, flow restrictors

Scissor-on-Scissor Lift



- With 3.5 ton lifting capacity for primary and secondary platform
- Primary platform lifting height 1862 mm (456 mm secondary lifting height)
- Secondary platform design - eliminate the requirement for additional roller jack and also have a clear unobstructed working area between the platforms
- Without columns, compact and space-saving design
- Dual engaging twin interlocking mechanical safety lock with pneumatic release (from 430 mm)

International Range of Mid Tyre Equipment

i-Aligner



geoliner 630

Wheel Balancer



geodyna 3700



geodyna 800/810

Tyre Changers



monty® 2500



monty® 1000

Automotive Lift



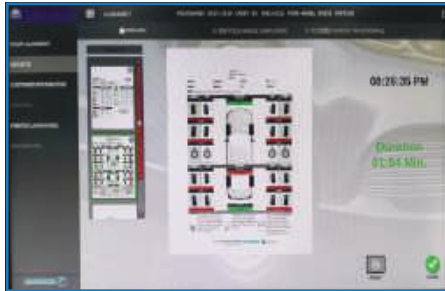
2 Post Lift

geoliner 630

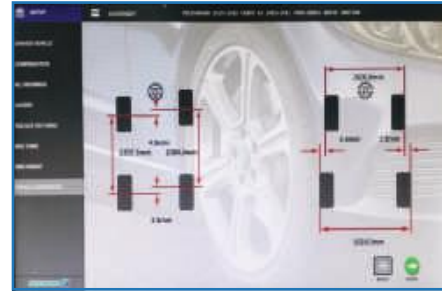


- 22" flat screen 1080p monitor
- HD camera with **V.O.D.I.***
- Multiple print report
- Vehicle dimension for pre-alignment diagnostic check
- Deluxe kiosk

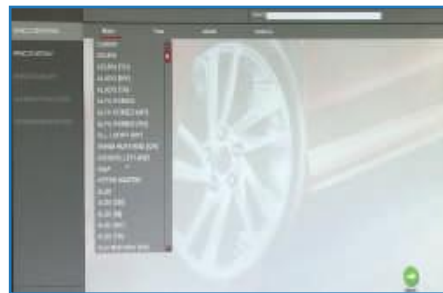
geoliner 630 Features



Multiple print report



Vehicle dimension for pre-alignment diagnostic check



Clear and comprehensive vehicle database selection with quick model search function

Technical Specification:

Track width: 48" – 96"
Wheel base: 79" – 180"
Rim size: 10" – 22"
Wheel size: unlimited
Clamp type: AC 100
Clamp weight: 4.2 Kg
Target small light weight, single plane XD:
152 mm x 203 mm
Type of camera: High resolution XD camera
Camera beam: Fixed aluminum beam
Cabinet type: Deluxe

Standard Accessories

Wheel clamps & targets
Steering wheel holder
Brake pedal depressor
Two wheel chocks
Printer
Turn table
Pedal roll back kit

geoliner 630 Specifications

Specifications

Rim diameter	11" - 22"
Track width	48" - 96"
Wheel base	79" - 180"
Monitor resolution	1080P
PC system	Mainboard plus mini PC

Standard Accessories

- Steering wheel holder
- Brake pedal depressor
- Two wheel chocks
- 22" flat screen 1080p monitor
- Built-in mini PC
- PC speakers
- Printer rack

geodyna 3700



- It is a professional video balancer for car, light truck and motorcycle wheels
- A perfect solution for garages that want to optimise working space
- Equipped with semi automatic data entry (SAPE) for the distance machine/rim and rim diameter, which saves time
- It is equipped with 19" monitor and a user friendly graphical interface with pictorials
- Adhesive weights can be hidden behind adjacent spokes of alloy rims
- The optional accessories include 3 cones, quick release hub, weight pliers and width caliper, with the optimisation mode

geodyna 3700 Specifications

Technical Specifications	Unit	<i>geodyna 3700</i>
Resolution	g	1
Measuring speed	rpm	200
Measuring time	s	6 - 10 s
Rim width (dynamic)	inch	1" - 16" (3" - 16")
Maximum wheel width	mm	500 (400 mm with wheel guard)
Rim diameter	inch	12" - 22"
Maximum wheel diameter	mm	1,016 (880 mm with wheel guard)
Data entry		2D SAPE
Maximum wheel weight	kg	65
Power supply	v/ph/Hz	220 - 240V, 1Ph, 50/60 Hz

geodyna 800



- Digital display
- 1D sape-distance
- easyALU
- Hidden/split weight
- Optimization

geodyna 800



Easy identification of ALU mode with bright LEDs indicating selected weight position



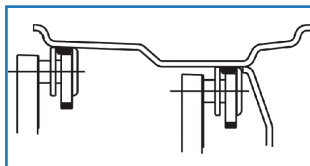
Convenient 10 Pocket molded - weight tray with integrated display panel



In split weight mode, adhesive weights can be hidden behind adjacent spokes of alloy rim



Wheel Guard is included as optional



ALU 2/3P mode for exact weight positioning



40 mm shaft diameter for superb stability and balancing of heavy wheels

Special Feature

Digital display with motorized balancer with safety hood, manual input of distance, diameter, width, HSP split weight mode, automatic braking after measurement, power supply 230 VAC

HOFMANN[®]



geodyna 800 Specifications

EQUIPMENT SPECIFICATIONS

Model	800
Display	LED, normal read-out, left and right, parameter indicators
Resolution	3g
Measuring speed	200 rpm
	6 - 10 s
	(Dynamic balancing) 1" 16" (3" - 16")
Maximum wheel width	500 mm (400 mm with wheel guard)
Rim diameter	12" - 22"
Maximum wheel diameter	1,016 mm (880 mm with wheel guard)
Balancing mode	Dynamic, static, 5 ALU mode
Data entry	Manual
Maximum wheel weight	65 kg
Power supply	240V, 1 Ph, 50 Hz
Centering cones	Diameter range 3 cones, 48 - 128 mm
Wheel guard	Standard

Special Feature

Patented RPM real plane measurement, digital display with motorized balancer with safety hood, power supply 230 VAC, calibration weight, sets of 3 cons, weight hammer

monty[®] 2500



- It is engineered for small garages and service stations
- The new pedal-controlled tilt-back post is locked in working position and manually tilted forward
- The self-centering four-jaws turntable ensure the rim is always correctly clamped. Center-clamp design with covered sliding grooves ensure operator's safety during tyre mounting and demounting
- A rugged and robust design to withstand the demanding environment of workshop
- The double-acting bead breaker cylinder ensures gentle handling of rims

monty[®] 2500 Specifications

Technical Specifications	Unit	monty [®] 2500
Outside clamping range	inch	10" - 20"
Inside clamping range	inch	12" - 22"
Maximum tyre width	inch	13
Maximum tyre diameter	mm	1000 mm
Chuck speed	rpm	6.5 rpm
Compressed air supply	bar	8 - 10 bar
Bead breaker force	kN	10 kN
Weight	kg	200 kg
Power supply	V/Ph/Hz	230V, 1Ph, 50/60 Hz, 200 - 415V, 3Ph, 50 Hz

monty[®] 1000



- Rugged and robust design to withstand the demanding environment of a workshop
- Swing-arm design that is suitable for a wide range of rim and wheel sizes
- 14 mm-thick square turntable to withstand the increased bending forces when handling large and low-profile tyres

monty[®] 1000 Specifications

Technical Specifications	Unit	monty [®] 1000
Power supply	V/Ph/Hz	230V, 1 Ph, 50/60 Hz
Outside clamping range	inch	10 -20
Inside clamping range	inch	12 - 22
Maximum tyre width	inch	13
Maximum tyre diameter	mm	1,000
Maximum bead breaking width	mm	330
Chuck speed	RPM	6.5
Compressed air supply	bar	8 - 10
Number of pedals		3
Clamping cylinder diameter	mm	70

AC Machines

Fully automatic station for recovering, recycling, and recharging R134a or HFO1234yf refrigerant with **Heavy Duty condenser and Improved ventilation**



R134a

HFO1234yf

ECK1890

ECK1890-HFO

Type of refrigerant	R134a or HFO1234yf
Service procedure	Fully automatic or manual
Voltage	220-240V 50/60 Hz
Scale resolution	10 g
Oil scale resolution	5 g
Working temperature range	11/49°C
Filter system	1 filter for humidity
Vacuum pump	100 litre/min capacity, 0.1 mbar vacuum level
Compressor	1/3 HP
Recovery speed	300 g/min in liquid phase
Refrigerant tank	12 litres, refillable
Hoses	3 metres
Dimensions/Weight cm.	55 x 60 x 105 kg 90
Dimensions/Weight Packaging cm.	70x70x122 kg.100
Thermal printer	Class 1
Pressure gauges	Class 2.5
Bottle heater	Standard equipment

HOFMANN[®]



OUR VALUED CLIENTS

CAR



Jeep

TYRE



HOFMANN[®]



Snap-on OFFICES

CORPORATE OFFICE:

Gurgaon: 6/2, Begumpur Khatola, Behind Grace, Toyota Showroom, NH-8, Gurgaon – 122004.
Tel.: 0124-4599700 | Fax: 0124-4056866.

NORTH:

Chandigarh: House no. 3235, 2nd Floor, Sector Swami Satsang Vyas, Chandigarh. 160019

Lucknow: Flat no 302 Kamla Residency, Behind In Fashion showroom Lekhraj Crossing, Faizabad Road, Lucknow - 226016

SOUTH:

Bengaluru: # 132 , Palace cross road, Near Palace Garden Apartment, Bengaluru - 560020, Telephone: 080- 4372 9985/86/87

Chennai: Flat #N, "Cee Dee Yes Enclave", Old # 1/3, New #27, Kumaran Colony, Third Street, Vadapalani, Chennai – 600026.
Tel.: 044-43021304.

Secunderabad: 1-8-308/4, 1st Floor, Beside Bajaj Service, Street # 1, Patigadda, Secunderabad – 500003. Tel.: 040-27907650.

EAST:

Kolkata: 40/6A, Ballygaunge Circular Road (Near Ballygaunge Phari), Kolkata-700019. Tel.: 033-40081440/441.

WEST:

Ahmedabad: A- 404, Pravah Apartment, NR. Judges Bungalow, Bodakdev, Ahmedabad – 380015, Tel.: 079-40051416.

Mumbai: 404/406, 4th Floor, Dilkap Chambers, Fun Republic Lane, Nr. Bansali Engineering, Veera Desai Road, Andheri West, Mumbai – 400053. Tel.: 022-67020909/400 | Fax: 022-67413788.

Pune: GAT NO. 2328/1, Chowkhi Dhani Road, Off Nagar Road, Wagholi, Pune-412207 Tel.: 08956322112/08956422112.

Visit our website: www.snaponindia.in

For sales query, email us – esales.in@snapon.com

Toll Free no. **1800-419-0450**

Authorized Reseller

Hofmann is committed to product innovation and improvement. Therefore, specifications listed in this brochure may change without notice. All rights reserved. All other marks are marks of their respective holders.

From the House of **Snap-on**



From the house of **Snap-on**